

Fully automated platform for determination of Benzodiazepines in serum

ASMS 2017 TP390

Davide Vecchietti¹, Claudio Ghilardi¹, Katharina Kern²,
Stephane Moreau³, Isabel Cabruja¹

¹ Shimadzu Italia, Milano, Italy,

² RECIPE Chemicals + Instruments GmbH, Munich, Germany,

³ Shimadzu Europe GmbH, Duisburg, Germany

Fully automated platform for determination of Benzodiazepines in serum

Introduction

Benzodiazepines (Figure 1) are a group of psychoactive drugs with a broad range of therapeutic effects. They act as anxiolytics, sedatives and anticonvulsants and belong to the most frequently prescribed drugs all over the world. Most benzodiazepines share a 5-phenyl-1,3-dihydrobenzo[e][1,4]diazepine nucleus with different substituents on the 1, 2, 3, 7 2' positions. Despite this similarity in the chemical structure the drugs differ in pharmacokinetics and metabolic properties. Long-term administration of benzodiazepines require therapeutic drug monitoring (TDM). The quantification is primarily performed from serum in order to optimize the drug dosing, to verify consumption compliance and to identify

changes in pharmacokinetics. The therapeutic drug monitoring of these molecules needs to be accomplished by extremely accurate techniques. Liquid chromatography coupled to tandem mass spectrometry (LC-MS/MS) shows high sensitivity and specificity. Nevertheless, LC-MS/MS approaches mostly lack standardization and the necessary throughput for the application in routine analysis. With the aim to reduce the operator involvement and to increase the throughput and data quality, we report a fully automated platform for LC-MS/MS quantifications of Benzodiazepines in serum by the use of a novel automatic preparation unit (CLAM-2000, Shimadzu) (the present work is intended for research use only).

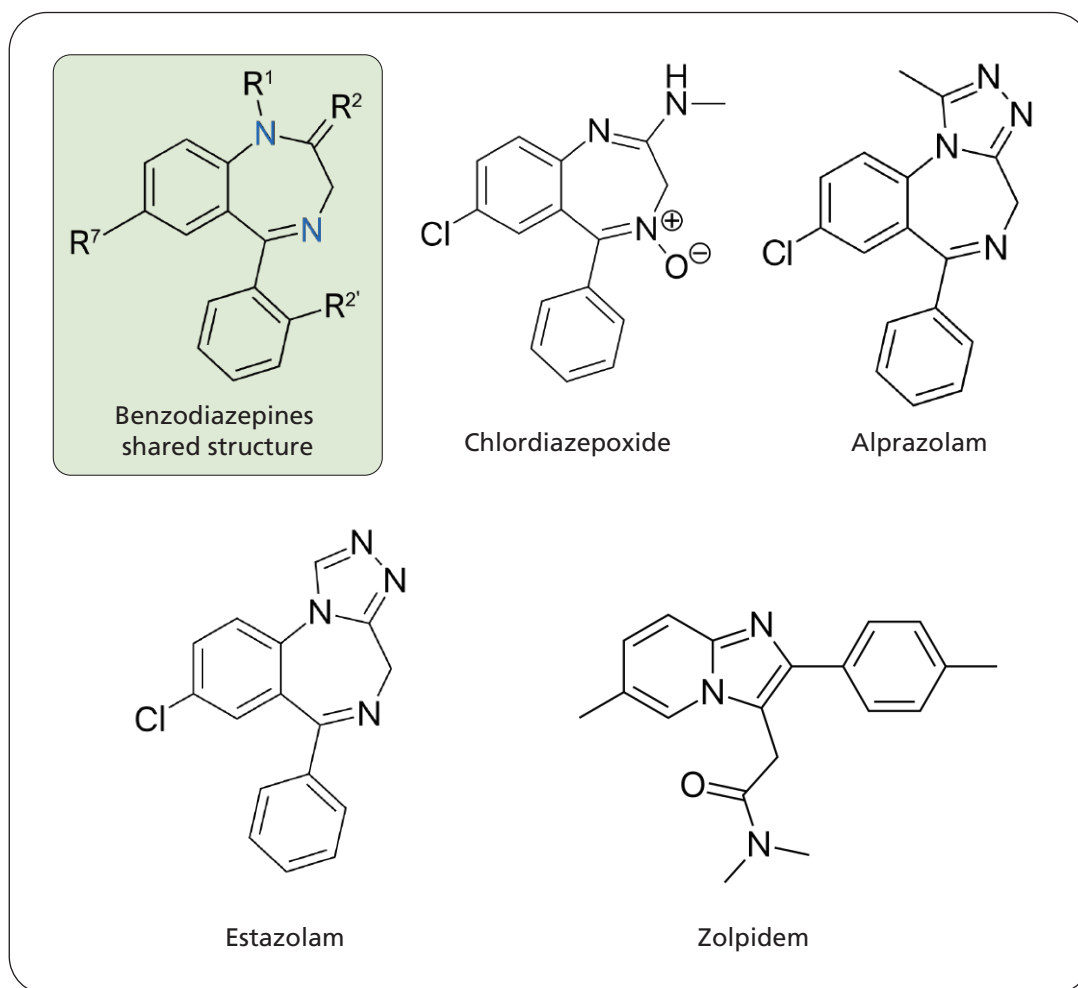


Figure 1: Benzodiazepines chemical structure and Zolpidem as example of non-benzo hypnotic agent.

Fully automated platform for determination of Benzodiazepines in serum

Methods and Materials

The analysis of benzodiazepines was performed using a fully automatic LCMS preparation Unit (CLAM-2000, Shimadzu, for research use only) online with HPLC-LCMS (NexeraX2-LCMS8060, Shimadzu) starting from serum samples using the “ClinMass® TDM Kit System” (Recipe, MS9500). Samples (Reference material: human serum samples), calibrators and Internal standard mix (Recipe, ClinMass® MS9512) were loaded onto the CLAM-2000

(refrigerated at 8°C). The treated samples were separated by the analytical column (Recipe, MS9030) at 40°C with a binary gradient system (Mobile phase A MS9007, mobile phase B MS9008) at a flow rate of 0.6 ml/min in 7.5 min (Table 1). Quantification was performed using optimized MRM transitions and Internal standard calibration method.

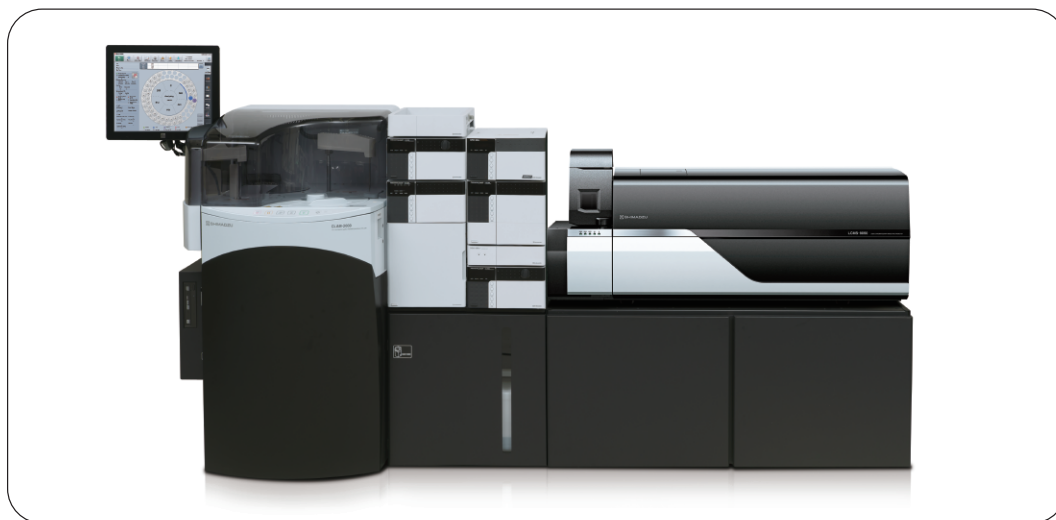


Figure 2: CLAM-2000 online with Nexera X2 system and LCMS-8060 triple quadrupole mass spectrometer.

Table 1: Analytical conditions and source parameters.

| [LC] NexeraX2 System | |
|------------------------|------------------------|
| Column Temp. | : 40°C |
| Time Program | : gradient A-B 7.5 min |
| Injection Volume | : 0.5 µL |
| [MS] LCMS-8060 | |
| Ionization | : ESI Positive |
| Nebulizer Gas | : 3 L/min |
| Interface temperature | : 300°C |
| Desolvation Line | : 250°C |
| Heat Block temperature | : 400°C |
| Drying Gas | : 10 L/min |
| Scan Type | : MRM |

Fully automated platform for determination of Benzodiazepines in serum

Results

Fully Automated sample preparation

Prior to the LC-MS/MS analysis a sample preparation is carried out in order to remove the sample matrix and to spike the sample with an internal standard. This procedure is time consuming and could be affected by bias caused by the operator due to the liquid transfer steps that are required (Figure 3), moreover it is difficult maintain the traceability of each steps for all the processed samples. Using the CLAM-2000 it was possible to obtain a complete integration of sample preparation steps with the LC-MS/MS quantification. The samples were loaded onto the CLAM-2000 using

disposable microvials or primary testing tubes. The fully automatic preparation/analysis procedure was performed as follows: I) 20 μ l of methanol were dispensed in a filtration-collection vial; II) 25 μ l of serum sample were added; III) 50 μ l of IS mix were added (protein precipitation); IV) stirring and incubation (1 min); V) filtration for 0.45 min (deproteinization); the sample was finally transported to the LCMS system without human intervention (Figure 3) for the quantification and the results were directly visualized by CLAM-2000 software control.

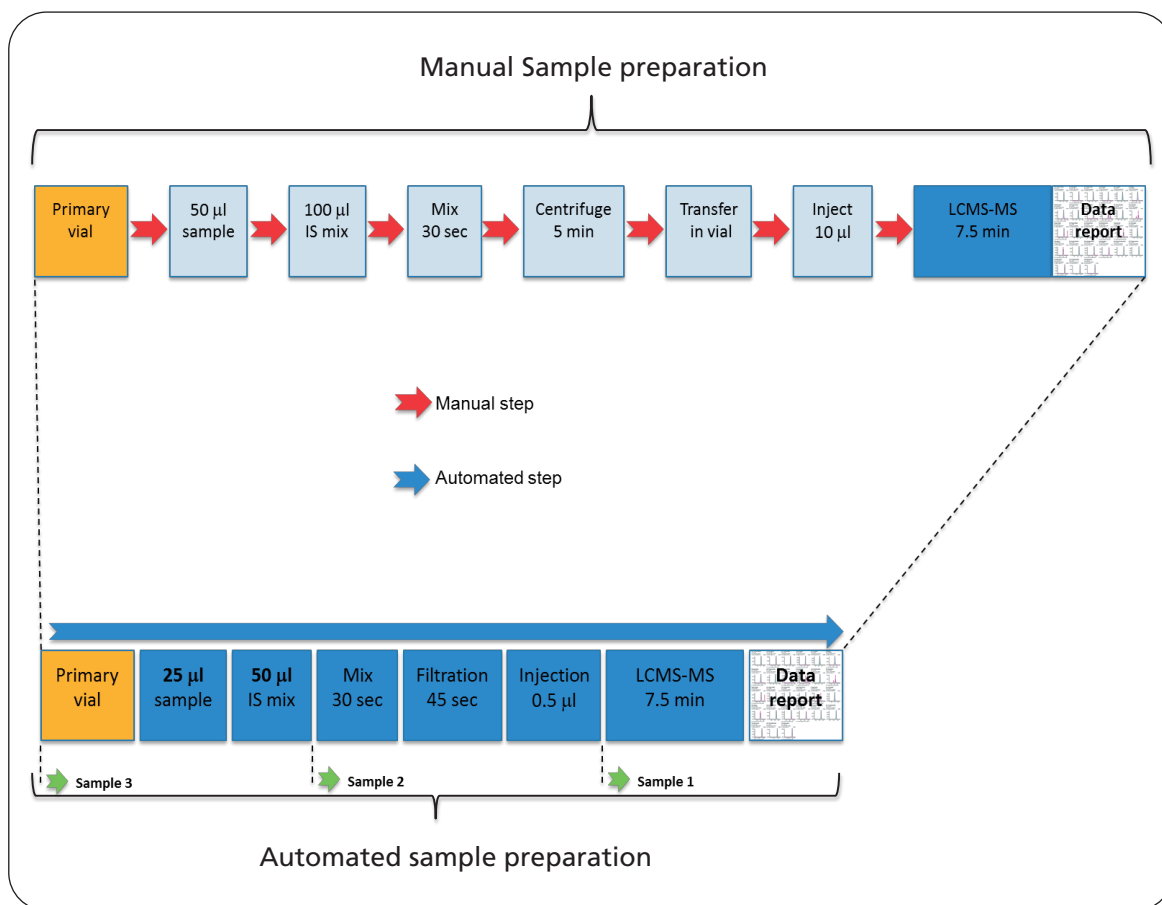


Figure 3: CLAM-2000 fully automated sample preparation and analysis. Due to the overlapped sample preparation the throughput of the instrument was 1 result each 8 minutes for quantification of all Benzodiazepines.

Fully automated platform for determination of Benzodiazepines in serum

Linearity, Accuracy and Precision

The linearity and accuracy of the method was evaluated using 3 reference serum calibrators levels (Recipe MS6013). For all the analytes linearity and accuracy were within the analytical acceptable range (85%-115%). Furthermore in order to estimate the precision of the method, reference serum samples (Recipe MS6082)

spanning from low concentration level to high concentration level were analyzed several times (6 replicates). For all analytes the CV% values were within acceptable analytical ranges. The same experiment was repeated for 4 non-consecutive days in order to estimate the inter-day precision.

Table 2: Linearity, Accuracy, and precision evaluated using ClinChek[®] MS6082 reference serum controls. *n=6 replicates; **n=4 non-consecutive days.

| Name | R ² | ACCURACY | | PRECISION (%CV) | | | | BIAS % | | | |
|------------------------|----------------|----------|-----|-----------------|------|------------|------|-----------|------|------------|------|
| | | | | INTRADAY* | | INTERDAY** | | INTRADAY* | | INTERDAY** | |
| | | min | max | Low | High | Low | High | Low | High | Low | High |
| 3-OH-Bromazepam | 0.998 | 98 | 100 | 4.7 | 3.7 | 4.4 | 3.5 | 0.4 | 1.2 | 6.7 | 4.9 |
| 7-Aminoclonazepam | 0.999 | 99.2 | 100 | 3.5 | 1.5 | 4.6 | 1.9 | 1.7 | 3.7 | 4.7 | 8.9 |
| 7-Aminoflunitrazepam | 0.999 | 99 | 100 | 2.8 | 2.8 | 2.6 | 2.6 | 1.9 | 0.3 | 6.3 | 7.3 |
| 7-Aminonitrazepam | 0.999 | 99.5 | 100 | 3.3 | 2.1 | 3.5 | 2.0 | 4.7 | 2.2 | 6.5 | 4.3 |
| alpha-OH-Alprazolam | 0.999 | 100 | 101 | 9.7 | 8.5 | 9.1 | 8.4 | 0.1 | 5.4 | 4.6 | 5.6 |
| alpha-OH-Midazolam | 0.999 | 100 | 100 | 2.0 | 4.0 | 3.5 | 2.0 | 0.4 | 0.4 | 5.0 | 3.0 |
| alpha-OH-Triazolam | 0.97 | 86.2 | 115 | 7.1 | 12.7 | 11.1 | 11.0 | 1.8 | 10.1 | 8.5 | 9.9 |
| Alprazolam | 0.997 | 94.6 | 107 | 4.3 | 5.8 | 11.4 | 5.2 | 4.4 | 6.9 | 9.8 | 9.0 |
| Bromazepam | 0.999 | 96.9 | 104 | 4.1 | 3.8 | 3.8 | 2.8 | 6.8 | 5.2 | 7.0 | 8.3 |
| Chlordiazepoxid | 0.999 | 97.4 | 102 | 2.5 | 4.8 | 4.7 | 4.2 | 8.0 | 9.4 | 11.4 | 12.1 |
| Clobazam | 0.999 | 97.4 | 103 | 5.4 | 3.6 | 4.1 | 3.2 | 1.7 | 3.2 | 7.4 | 7.0 |
| Clonazepam | 0.999 | 96.1 | 103 | 3.7 | 5.5 | 5.9 | 5.0 | 7.8 | 4.9 | 6.7 | 6.0 |
| Demoxepam | 0.999 | 98.1 | 103 | 3.3 | 3.1 | 2.0 | 2.2 | 1.0 | 0.5 | 3.9 | 4.1 |
| Desalkylflurazepam | 0.999 | 96.7 | 105 | 6.6 | 3.2 | 6.1 | 2.6 | 5.8 | 0.5 | 6.6 | 5.8 |
| Desmethylflunitrazepam | 0.999 | 97.4 | 104 | 8.2 | 5.6 | 8.4 | 3.4 | 4.4 | 5.0 | 5.2 | 9.6 |
| Diazepam | 0.999 | 96.7 | 105 | 7.8 | 5.6 | 6.2 | 4.2 | 9.1 | 6.4 | 11.6 | 12.8 |
| Estazolam | 0.999 | 99.9 | 100 | 2.0 | 1.8 | 2.6 | 3.2 | 1.2 | 2.0 | 6.2 | 9.0 |
| Flunitrazepam | 0.999 | 94.6 | 102 | 5.8 | 7.7 | 6.9 | 4.9 | 3.9 | 3.4 | 8.1 | 5.5 |
| Flurazepam | 0.999 | 97.4 | 102 | 5.5 | 8.6 | 5.3 | 4.9 | 0.3 | 13.3 | 9.9 | 15.0 |
| Lorazepam | 0.999 | 99.8 | 100 | 4.5 | 7.9 | 2.4 | 4.1 | 11.8 | 3.4 | 10.0 | 9.2 |
| Lormetazepam | 0.996 | 91 | 106 | 6.3 | 3.9 | 7.0 | 2.5 | 9.8 | 14.3 | 9.1 | 14.1 |
| Midazolam | 0.999 | 96.5 | 102 | 4.4 | 5.2 | 5.1 | 6.3 | 9.8 | 15.0 | 9.7 | 13.6 |
| Nitrazepam | 0.998 | 95.1 | 107 | 7.3 | 5.0 | 3.4 | 2.3 | 1.0 | 0.6 | 4.6 | 6.9 |
| Norclobazam | 0.998 | 95.6 | 106 | 3.7 | 2.5 | 2.4 | 2.0 | 9.0 | 12.0 | 9.2 | 12.7 |
| Nordiazepam | 0.999 | 98.3 | 102 | 1.9 | 1.5 | 2.0 | 2.1 | 0.8 | 3.1 | 5.3 | 6.5 |
| Oxazepam | 0.999 | 99 | 101 | 1.9 | 1.5 | 3.2 | 1.5 | 3.5 | 4.8 | 6.2 | 8.2 |
| Prazepam | 0.999 | 96.5 | 102 | 7.6 | 1.9 | 6.9 | 3.4 | 1.8 | 12.7 | 2.3 | 10.6 |
| Temazepam | 0.999 | 99 | 101 | 6.2 | 4.1 | 4.1 | 3.4 | 9.8 | 2.6 | 10.9 | 6.2 |
| Tetrazepam | 0.999 | 96.7 | 105 | 12.6 | 11.3 | 14.4 | 6.3 | 6.9 | 15.0 | 13.7 | 14.1 |
| Trazodon | 0.997 | 94.7 | 107 | 8.5 | 4.1 | 8.7 | 4.8 | 4.9 | 1.9 | 7.3 | 9.2 |
| Triazolam | 0.998 | 95.5 | 106 | 7.2 | 2.3 | 8.8 | 4.0 | 0.4 | 1.7 | 6.8 | 4.3 |
| Zaleplon | 0.996 | 93.2 | 109 | 7.6 | 2.5 | 5.7 | 4.7 | 6.3 | 12.1 | 5.7 | 7.3 |
| Zolpidem | 0.999 | 96.2 | 103 | 3.0 | 3.1 | 3.4 | 3.2 | 9.0 | 5.1 | 3.7 | 5.3 |

Fully automated platform for determination of Benzodiazepines in serum

Conclusions

- Fully Automated sample preparation procedure resulted suitable for the quantitation of Benzodiazepines by elimination of all manual preparation steps.
- The automation of the method increases the analytical performance, reduces the risk for human operators and due to the reduced reagent consumption, reduces also the cost of the analysis.

Disclaimer: The products and applications in this presentation are intended for Research Use Only (RUO). Not for use in diagnostic procedures. Not available in the USA, Canada and China.

First Edition: June, 2017

For Research Use Only. Not for use in diagnostic procedures.

This publication may contain references to products that are not available in your country. Please contact us to check the availability of these products in your country.

The content of this publication shall not be reproduced, altered or sold for any commercial purpose without the written approval of Shimadzu. Company names, products/service names and logos used in this publication are trademarks and trade names of Shimadzu Corporation, its subsidiaries or its affiliates, whether or not they are used with trademark symbol "TM" or "®".

Third-party trademarks and trade names may be used in this publication to refer to either the entities or their products/services, whether or not they are used with trademark symbol "TM" or "®".

Shimadzu disclaims any proprietary interest in trademarks and trade names other than its own.

The information contained herein is provided to you "as is" without warranty of any kind including without limitation warranties as to its accuracy or completeness. Shimadzu does not assume any responsibility or liability for any damage, whether direct or indirect, relating to the use of this publication. This publication is based upon the information available to Shimadzu on or before the date of publication, and subject to change without notice.