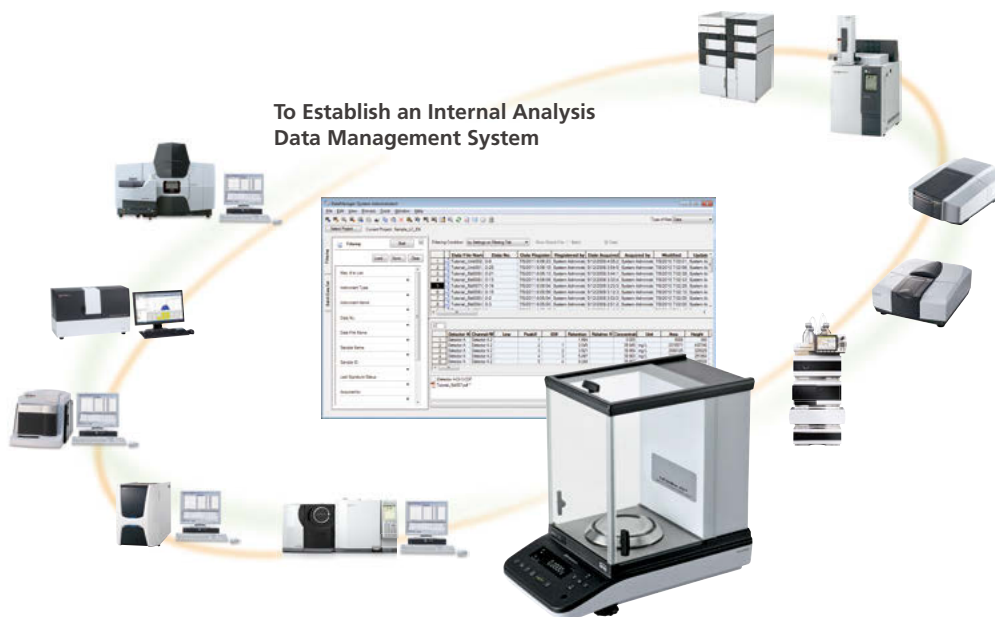


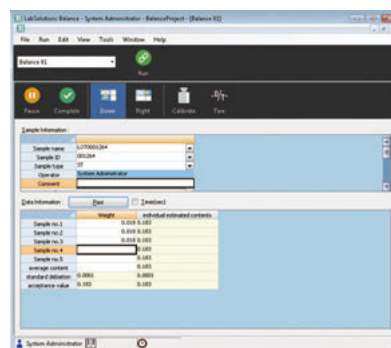
Integrate Analysis Data Acquired from Balances to Analytical Network Data System Compliant with ER/ES Regulations

LabSolutions Balance



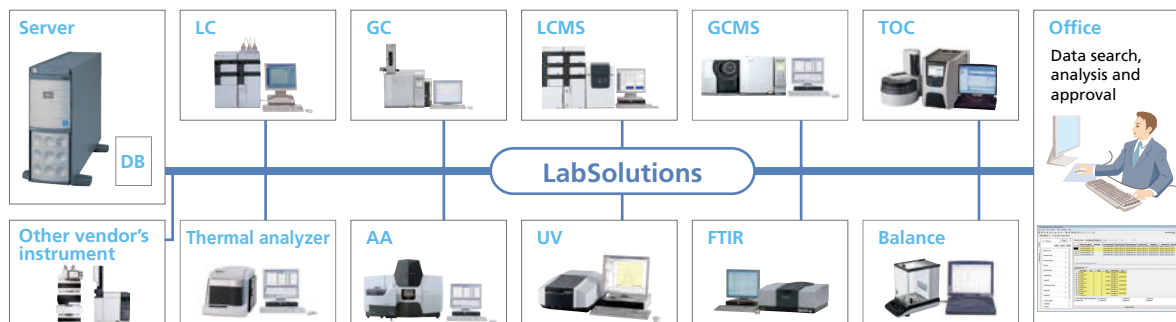
Improves Operational Efficiency and Data Reliability

- Eliminate manual entry and all the weighing data are saved automatically in a safe database without transcription mistakes.
- Reports appropriate for weighing methods, such as the mass variation test, drying weight loss test and particle size test, can be created automatically after the measurement. In addition, customized reports featuring such information as system conformance, content uniformity and elution tests together with the analysis results obtained by HPLC, etc. can be created.



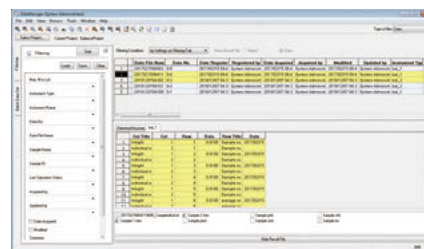
Main Window of LabSolutions Balance

Integrated Management of Analytical Data on Network System Using LabSolutions



Compliant with the Latest Data Integrity Guidance (U.S. FDA 21 CFR Part 11)

- Weighing results can be automatically saved in the database together with other information, including sample ID, operator name, operation date and series number of instrument used. This enables quick data searching based on sample information.
- It allows setting up user authority to ensure only the authorized user can create a template for weighing.
- It prevents improper manipulation, unintended overwriting and deletion of data. In addition, measurement results, all the operation histories and reasons will be saved in the database as log files.



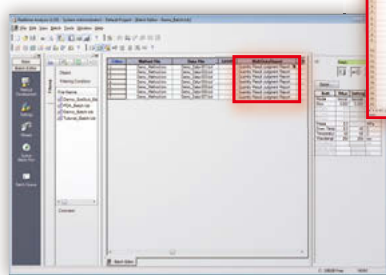
LabSolutions Data Manager

Integrated Report Creation Function Combines Analysis Results from HPLC and Weighing Results from Balance

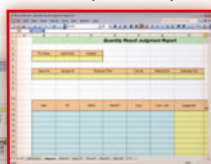
Creation of Report Template

It enables creating the report by reading sample data and confirming the sample report at the same time.

Select Report Template



Batch Analysis Window



Report template formats can be freely customized.



Automatically print reports and create PDF files.

Note: Multi-data report creation (optional) is necessary to use this function.

Specifications

OS	Windows 7 Professional (32bit/64bit), Windows 10 Pro
Compatible Instruments	Shimadzu AP, AU, AT and UW/UX series
Other Functions	Controls up to 2 balance units, generation of PDF files, interface supporting linkage to LIMS system (option)



Shimadzu Corporation
www.shimadzu.com/an/

For Research Use Only. Not for use in diagnostic procedures.

This publication may contain references to products that are not available in your country. Please contact us to check the availability of these products in your country.

Company names, products/service names and logos used in this publication are trademarks and trade names of Shimadzu Corporation, its subsidiaries or its affiliates, whether or not they are used with trademark symbol "TM" or "®".

Third-party trademarks and trade names may be used in this publication to refer to either the entities or their products/services, whether or not they are used with trademark symbol "TM" or "®".

Shimadzu disclaims any proprietary interest in trademarks and trade names other than its own.

The contents of this publication are provided to you "as is" without warranty of any kind, and are subject to change without notice. Shimadzu does not assume any responsibility or liability for any damage, whether direct or indirect, relating to the use of this publication.